

ASSEMBLY INSTRUCTION

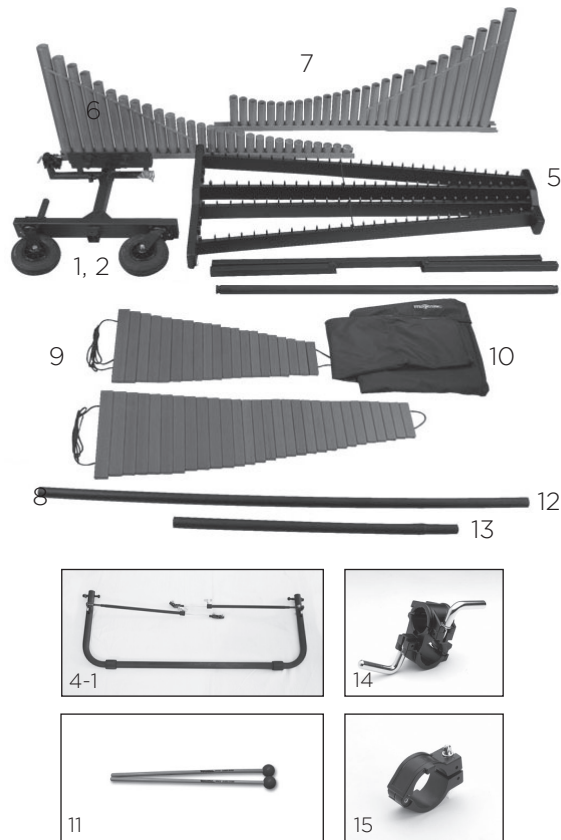


QUANTUM
XYLOPHONE/VIBRAPHONE



Ver. 201307

I. Components P1



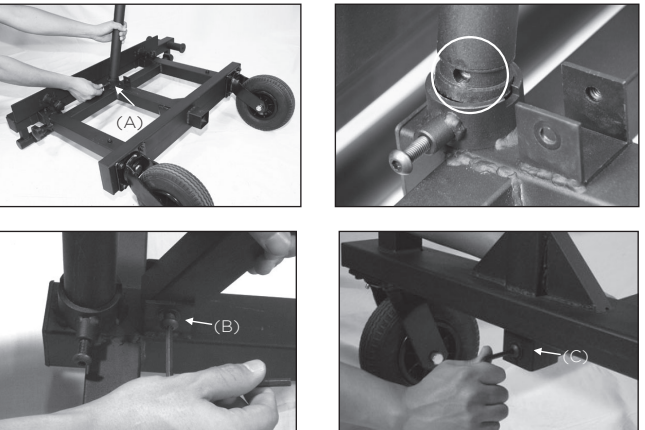
P2

Item	Parts Description
1	Leg Assembly - Bass End x 1
2	Leg Assembly - Treble End x 1
3	Frame Center Cross Bar x 1
4	Frame Bottom Cross Bar w/ Support x 1
4-1	Pedal (Vibraphone only) x 1
5	One-piece Frame / Rails (no.1- no.4) x 1
6	Resonator- Naturals x 1
7	Resonator- Accidentals x 1
8	Tone Bars-Naturals x 1
9	Tone Bars-Accidentals x 1
10	Protective Cover x 1
11	Mallets x 1
12	Front Accessory Bar x 1
13	Front Speaker Post x 1
14	Acc. Mount T-Clamp (AQ11/RU8Q) x 3
15	Acc. Mount Memory Lock (AQ09/RU8C) x 4

II. Build the frame P3

● **Assembly side leg**
With Bass End Leg Assembly lying flat on the ground, place the Center Cross Bar in to position (A). Align hole, insert screw through hole and tighten with the Allen key provided.

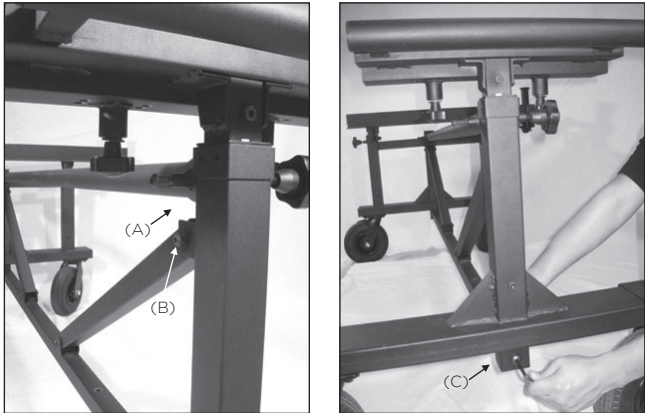
Place the Frame Bottom Cross Bar w/ Support in Leg Assembly by connecting to support bar in position (B), and insert the Cross Bar in position (C). Align hole, insert screw through hole and tighten with the Allen key provided.



P4

⚠ **Engage brakes before setting Leg Assembly in upright position. This will provide stability and traction. Wheels should be positioned with brakes facing playing side.**

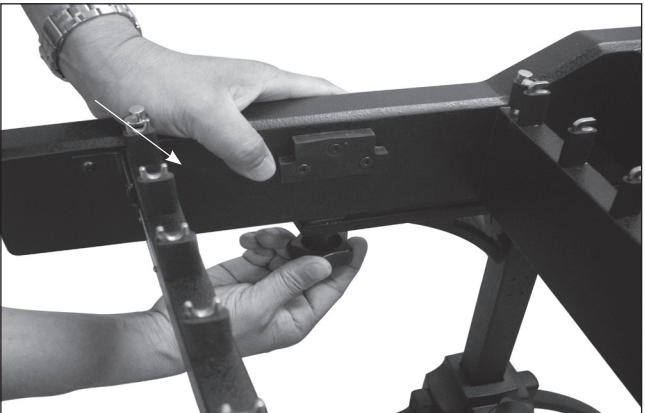
Set the Bass End Leg Assembly upright, cross bars are horizontal to ground, repeat the process on Treble End Leg Assembly.



P5

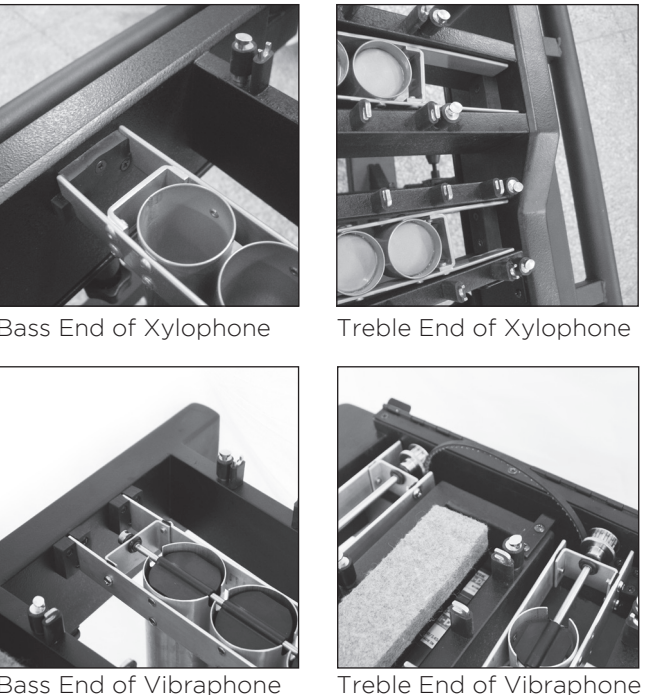
● **Assembly frame / rails**
Set up the one-piece keyboard frame on top of the finished frame / Leg complete. Standing on the player side, Treble End (small end) is to your right, Bass End (Large End) is to your left. Match the holes with screw, then tighten the knob by hand.

⚠ **Keyboard frame should be placed on legs with wheel brakes facing player.**



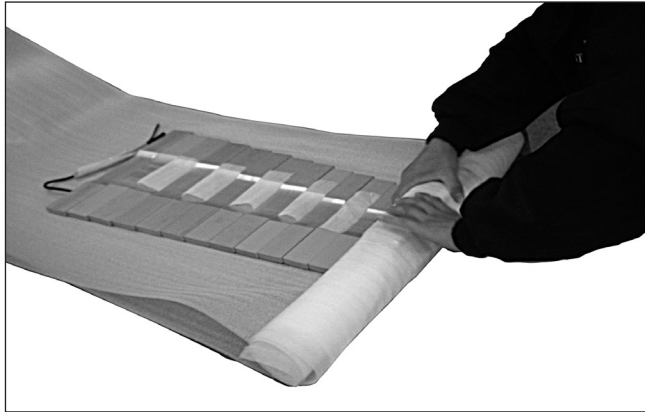
III. Set up Resonators P6

● **Attach natural scale resonator**
● **Attach accidental scale resonator**
Resonators are set under the frame. Pick up one resonator, insert treble end through frame, then swing bass end into position, hanging on the rubber notches. Repeat process for the other resonators.



IV. Placing tone bars P7

● **Unroll the bars**
Carefully unroll the tone bar, flip the bars so that the finish side faces up (arch side faces down). Place the bars on top of lower level rail (close to player side).



● **Position tone bars**
Position the bars into post, begin from treble end, working progressively down towards bass end.

P8

● **Fasten cord & spring**
Once all bars are in place, pull excess bar cord through bass end, bring bar cord around end posts and hook the springs together.

⚠ *You can adjust knot position on the cord to get different cord tension after springs are connected.*



V. Other adjustments P9

● **Instrument height**
Hold frame end with one hand, using the other hand to loosen the knob to raise or lower the keyboard height as needed. Tighten the knob after adjustment.



⚠ *Adjust one end at a time, using scale guide to level instrument. Do not exceed 2" increments at a time.*

● **Pedal height -For Vibraphone Only-**
Attach Damping Pedal- Working from player side of instrument, attach pedal to lower cross bar. Align hole, insert screw through hole and tighten with the Allen key provided (see circled area).

Attach pull rods- Loosen wing knob on the pull rod, extend the upper section steel rod to connect with the universal joint on the underside of instrument, tightening screw with drum key.

Once pull rods are attached, pedal can be set to the preferred height. Secure by tightening wing knob in

P10

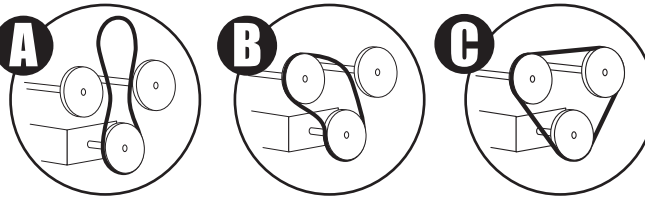
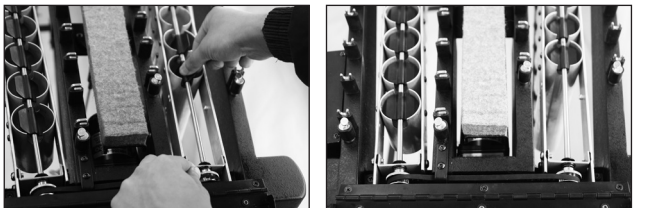
the middle. Besides the preset pedal weight, user can switch to the other connecting position for heavier pedal response

⚠ *Wing knob must be loosened before keyboard height can be adjusted. Pedal height must be adjusted accordingly.*



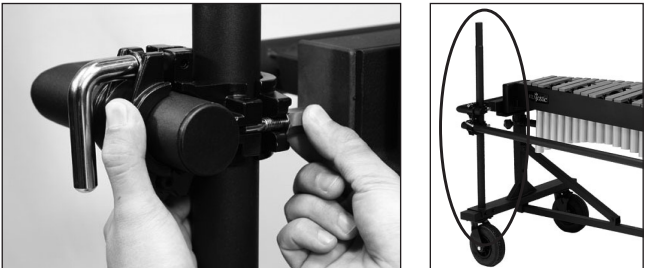
P11

● **Pulsator belt -For Vibraphone Only-**
Making sure both pulsators are in the open position, loop the tooth belt around the motor pulley and both pulsator pulleys (it should resemble an inverted triangle when motor is idle).



VI. Other parts P12

● **Front speaker post**
Working from the audience side of instrument, place speaker post on the wheel deck located on treble end leg assembly. Attach the speaker post to frame with T-Clamp (AQ11/RU8Q).



● **Front accessory bar**
Working from the audience side of instrument, use T-Clamps to attach front accessory bar to the speaker post at the treble end, and directly onto the leg assembly at the bass end. (as shown on the photo)



P13

● **Additional accessory attachment**
You may purchase additional T-Clamps (AQ11/RU8Q) or Swivel-Clamp (AQ10/RU8S) to attach other instruments onto the rack (e.g. Cymbal, Snare Drum, Bells).



VII. Finished View P14

