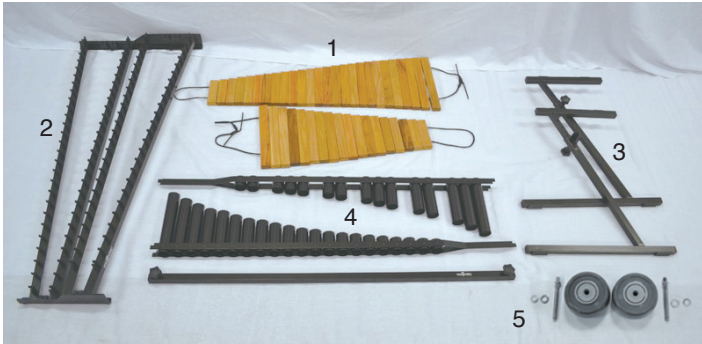


1

Check Contents

- | | |
|---------------------------------------|--------|
| 1. Tone Bars (naturals & accidentals) | x 2 st |
| 2. Keyboard Frame | x 1 pc |
| 3. Z-Stands (legs & crossbar) | x 1 st |
| 4. Resonator Set (optional) | x 2 pc |
| 5. Upgrade: add-on wheel (optional) | x 2 pc |

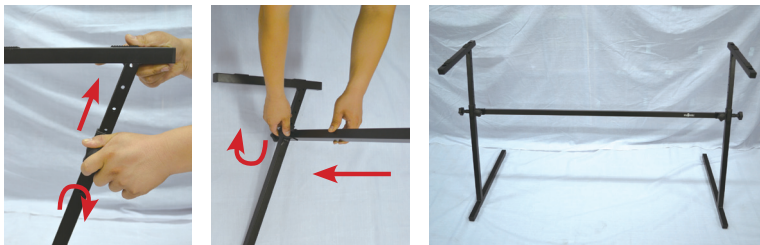


2

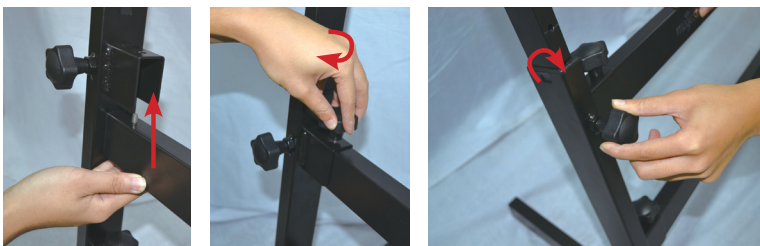
Assembly leg stand

Setup Z-stand by adjusting height on upright legs. Loosen knob, Slide the pin in position, and then tighten the knob. (match height on both upright sections) If M5533 Resonators are used, must keep 5 pin holes or more open. Connect crossbar to the middle of each upright leg, secure the crossbar by tightening each knob.

For X5535 Xylophone



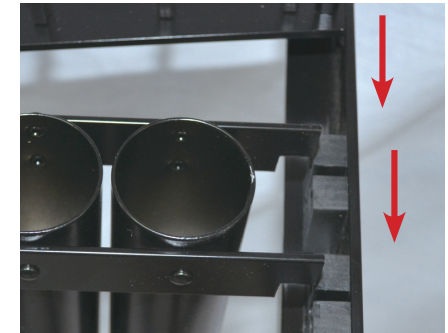
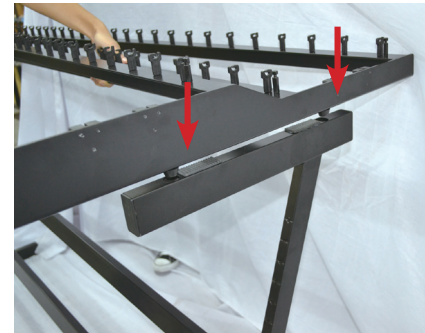
For M5533 Marimba



3

Attach Keyboard frame & Resonators (optional)

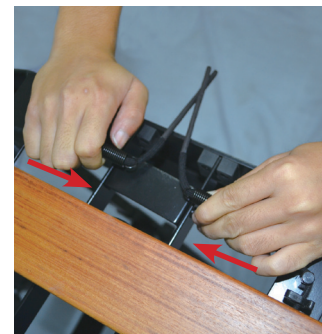
1. Fit the round rubber feet under the frame with the slots on top of each Z leg and Slide-in to attach.
2. Attach resonator set by hanging each end on the rubber brackets at inner side of keyboard frame. (the full resonator section is for the naturals and the staggered resonator section is for the accidentals)



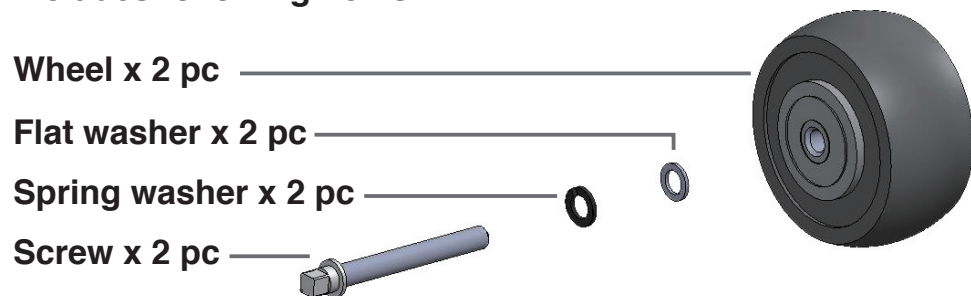
4

Attach bars to the frame

1. Unroll the tone bars carefully, holding the cord from both ends, place the bars onto the frame.
2. Align bars between each post, slide cord into the ring of each post. (Attach the naturals first, followed by the accidentals)
3. Pull the cord at the low register end to a medium tension. And then connect the springs. (adjust the knot at each spring to adjust tension)



Add-On Wheels (PGC26-252A) (MGW2 USA)
includes following items



Step by Step instruction:

1. Remove the parts from the bag
2. Insert screw with the sequence of spring washer, flat washer and wheel.
3. Attach the wheel assembly to Z-stand. The screw slots are available only at one end of leg.
4. to finish the installation, fasten the screw and tighten with drum-key.

